

Biblioteca estense universitaria

Largo S. Agostino 337

I-41121 Modena

TEL ++39 +59 222248

FAX ++39 +59 230195

<http://www.cedoc.mo.it/estense/>

alfa.x.2.14

Sphaerae coelestis et planetarum descriptio

(De Sphaera)

15. sec.

Forse dal corredo dotale di Anna Sforza, moglie di
Alfonso 1. d'Este



BIBLIOTECA ESTENSE
UNIVERSITARIA

RIPR.
ESTENSI

15

1
BIS

DIREZIONE



Ripr. Estensi

15.

1.

BIS

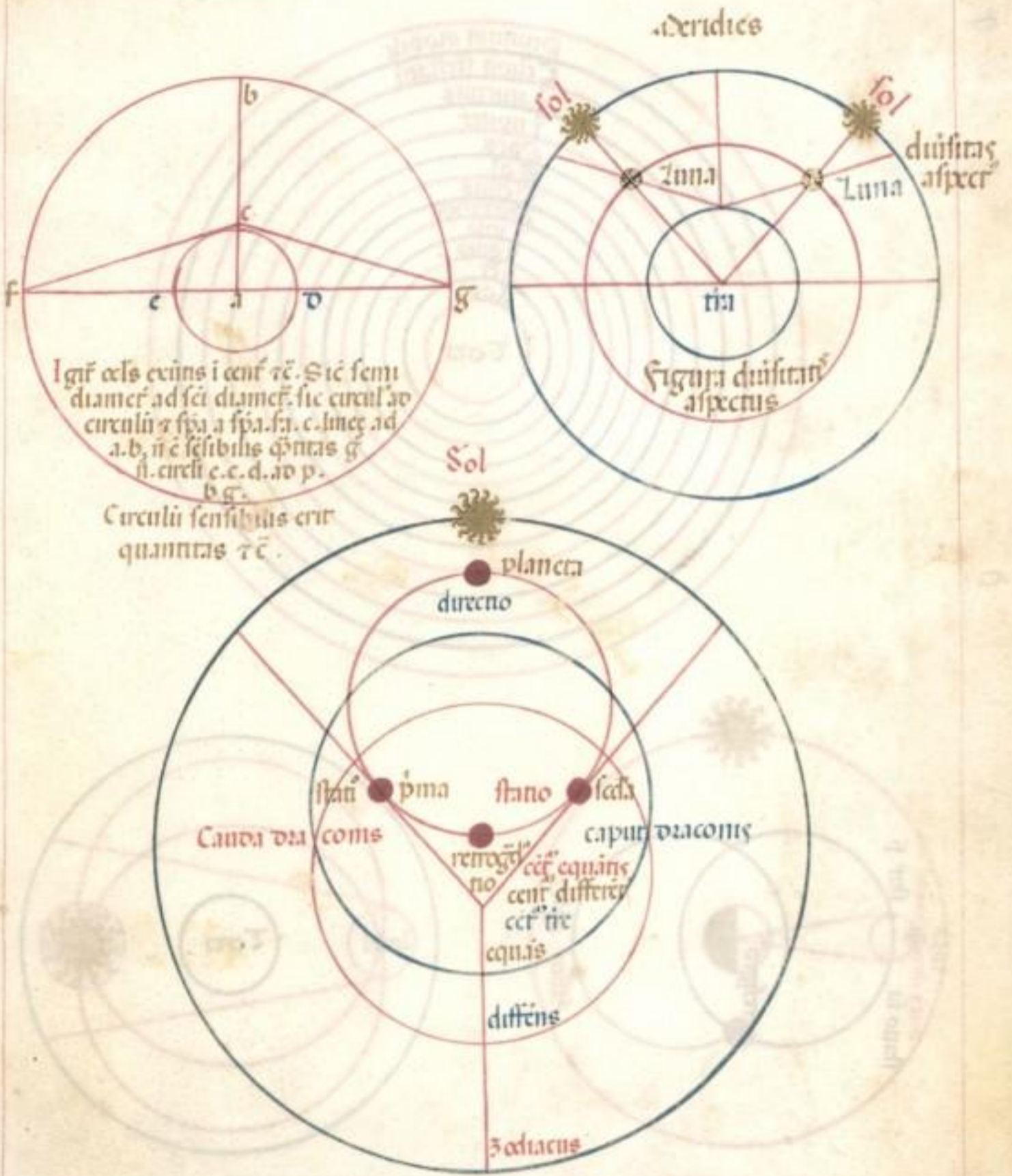
~~S. Ass~~

poi

~~Rav. Mod.~~

~~B.~~

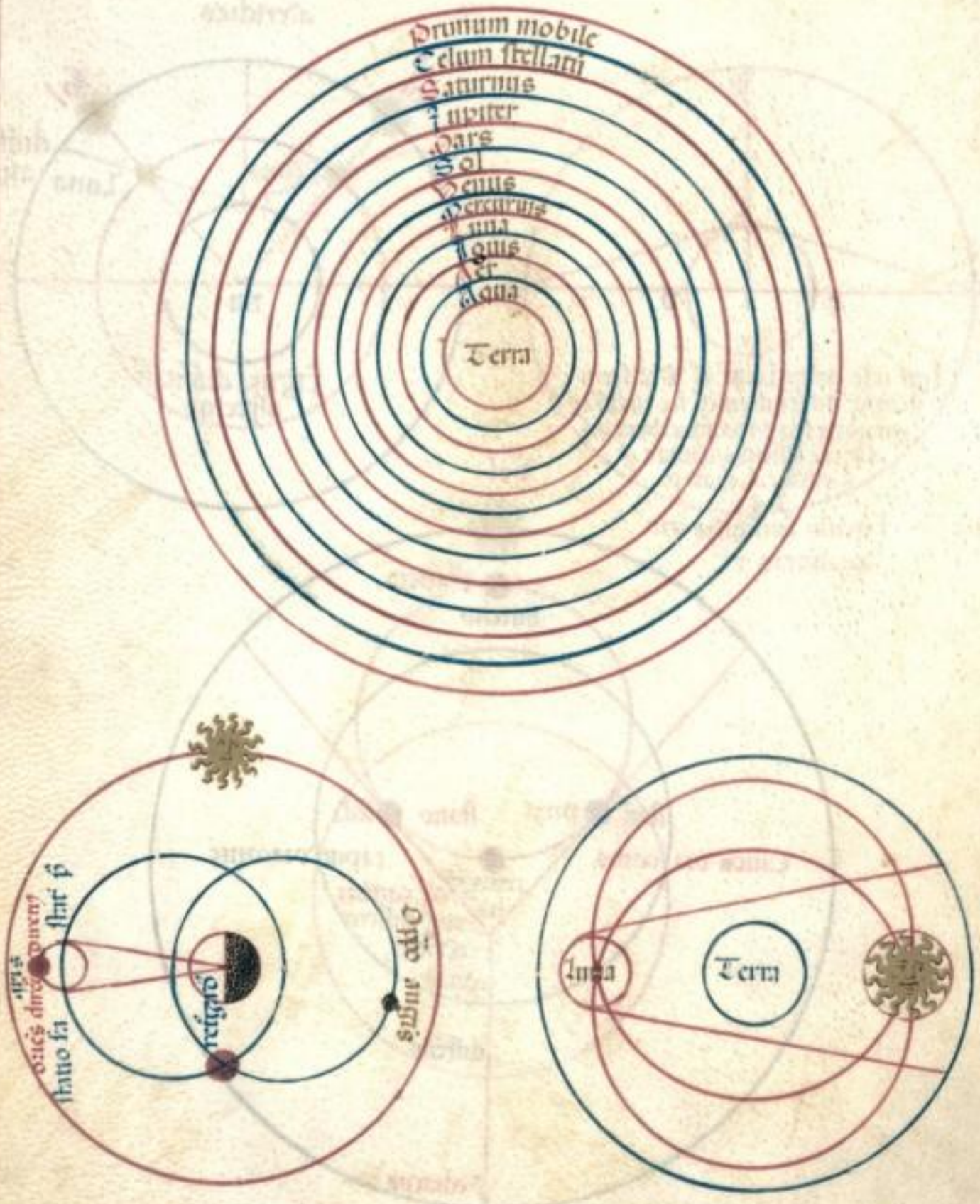
~~38~~



Igitur cels exius i cent re. Sic semi
 diamet ad sei diamet. sic circuli ad
 circuli a spa a spa. h. c. linee ad
 a. b. n e sensibilibs qntas g
 h. circuli e. c. d. ad p.
 b. g.

Circuli sensibilibs erit
 quantitas re.

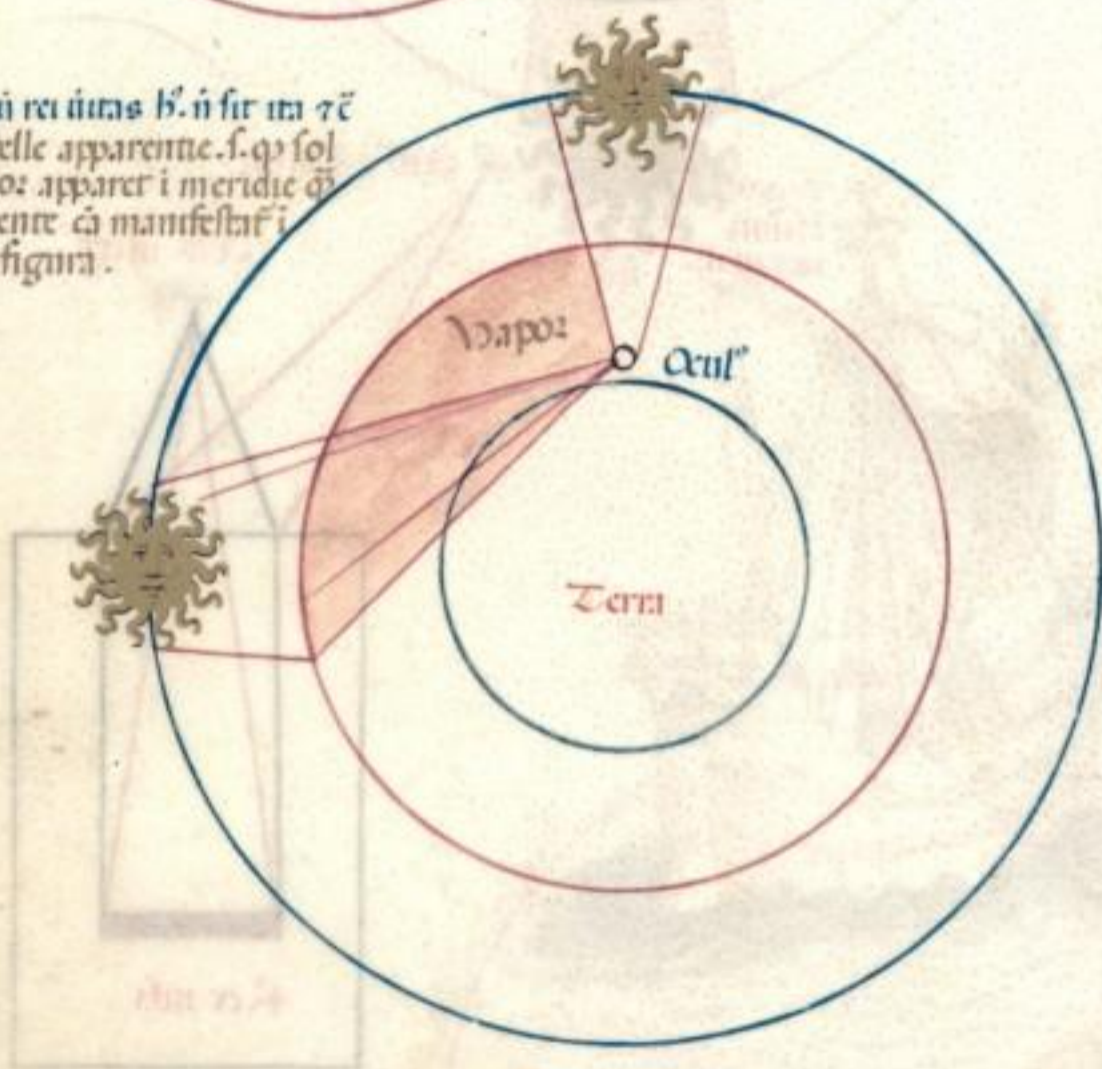
B.E.



REF

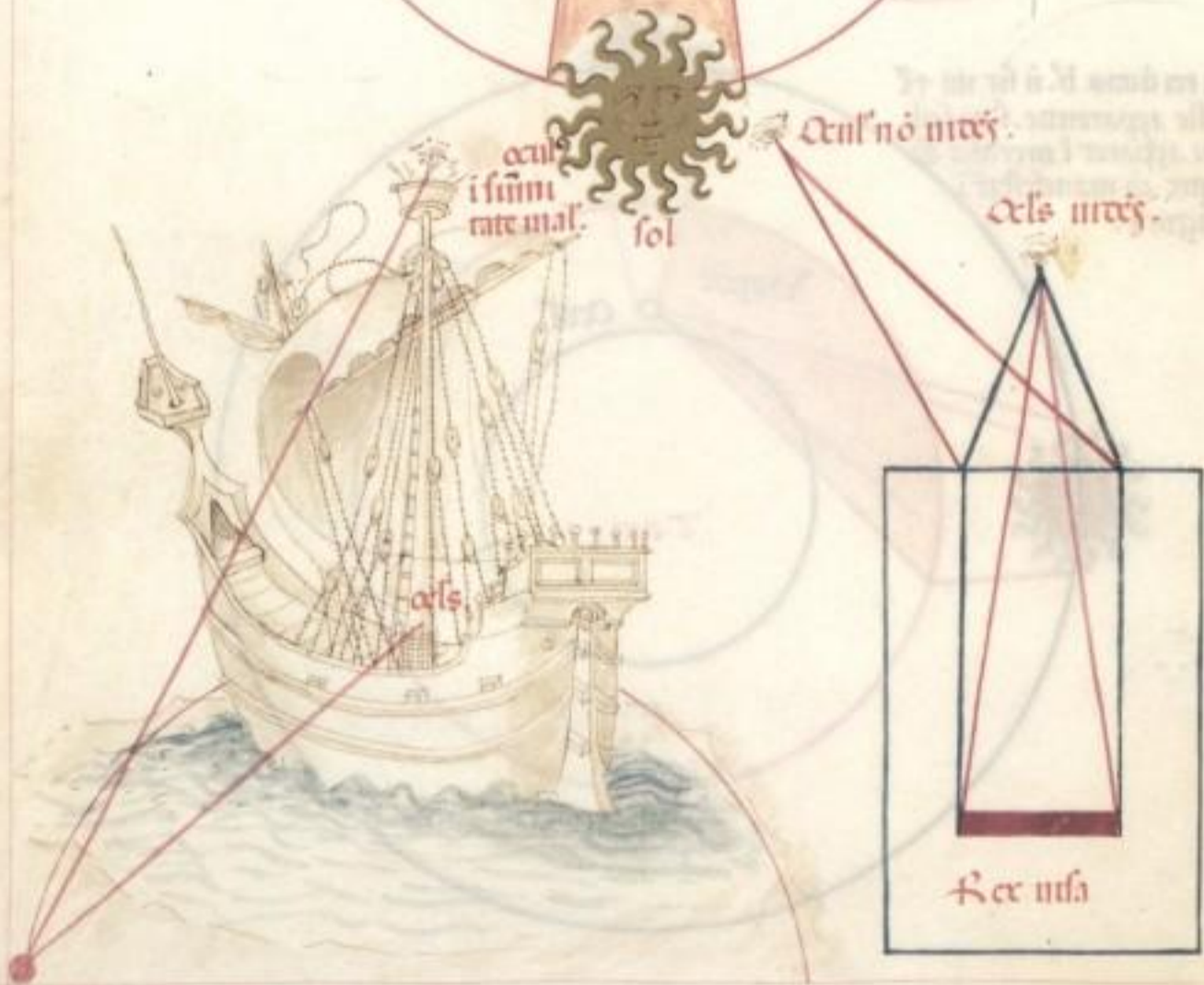
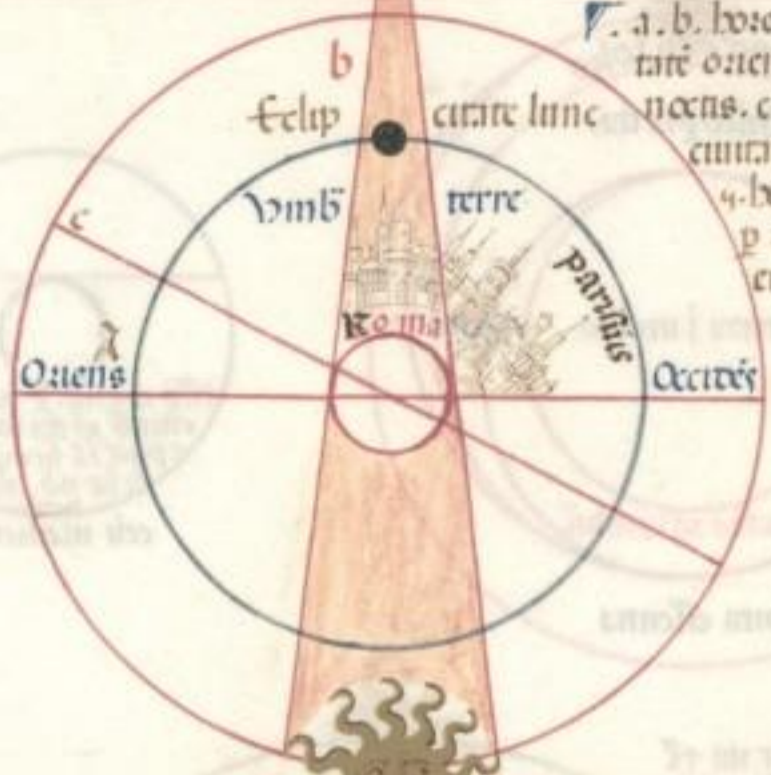


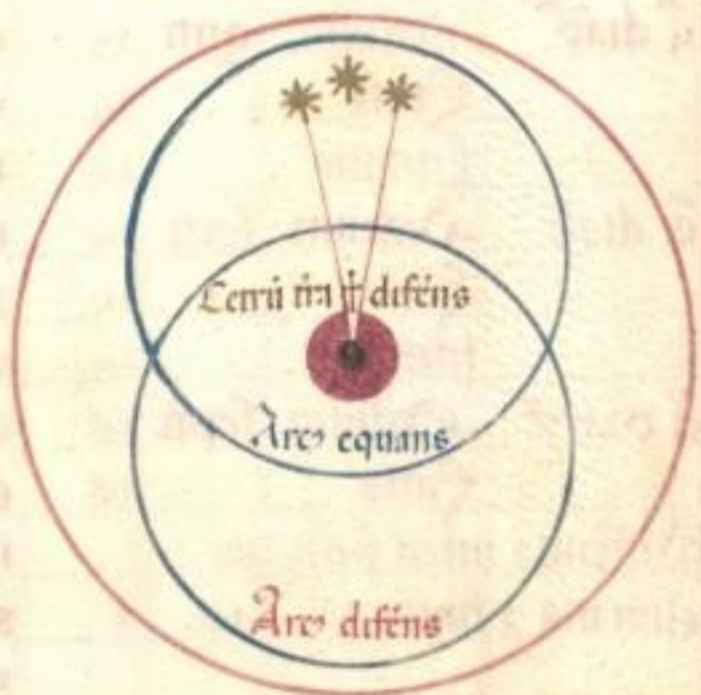
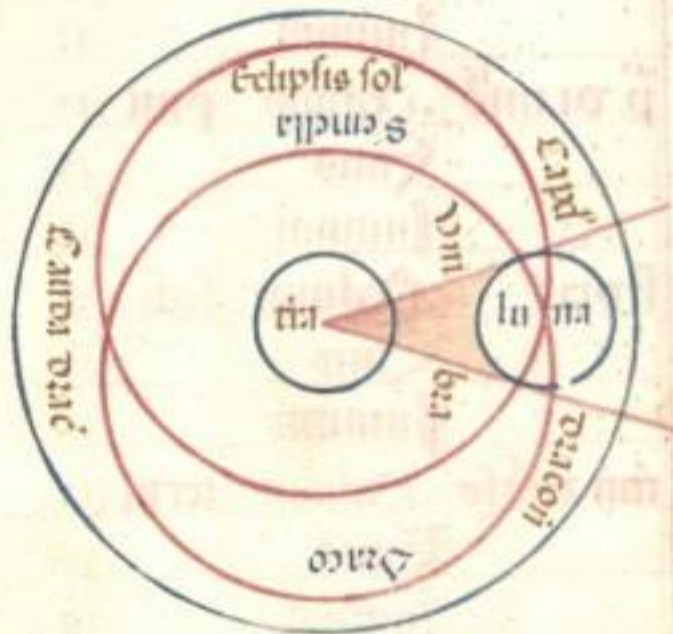
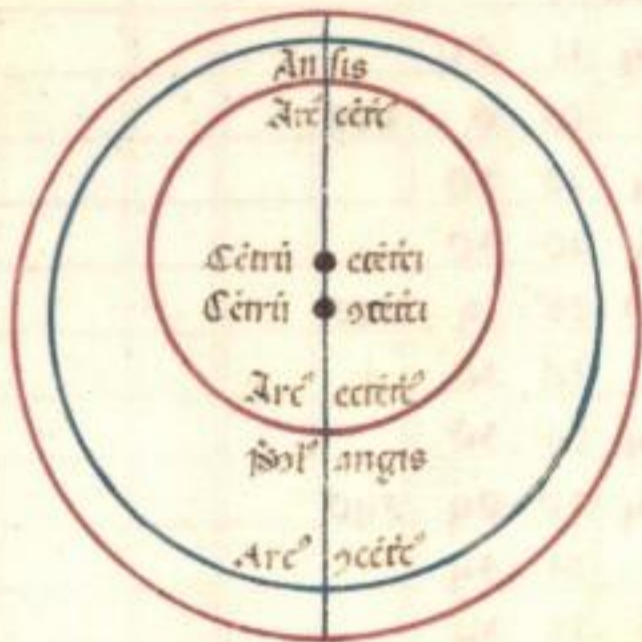
Ss cū rei uitas h. n̄ sit ita r̄c
13^o stelle apparente. s. q̄ sol
minoz apparet i meridie q̄
i ouente cā manifestat i
hac figura.



a. Meridies

¶ a. b. hore eclipsis lune ap̄ cun-
tate orientatoꝝ & sic. 6. hore
necens. c. b. ore eclipsis lune
cunitatis occidentalis & sic
4. hore q̄ p̄us incipit nō
p̄ unā hōrā ap̄ orientatoꝝ
et h̄ nūmō: tre ē.



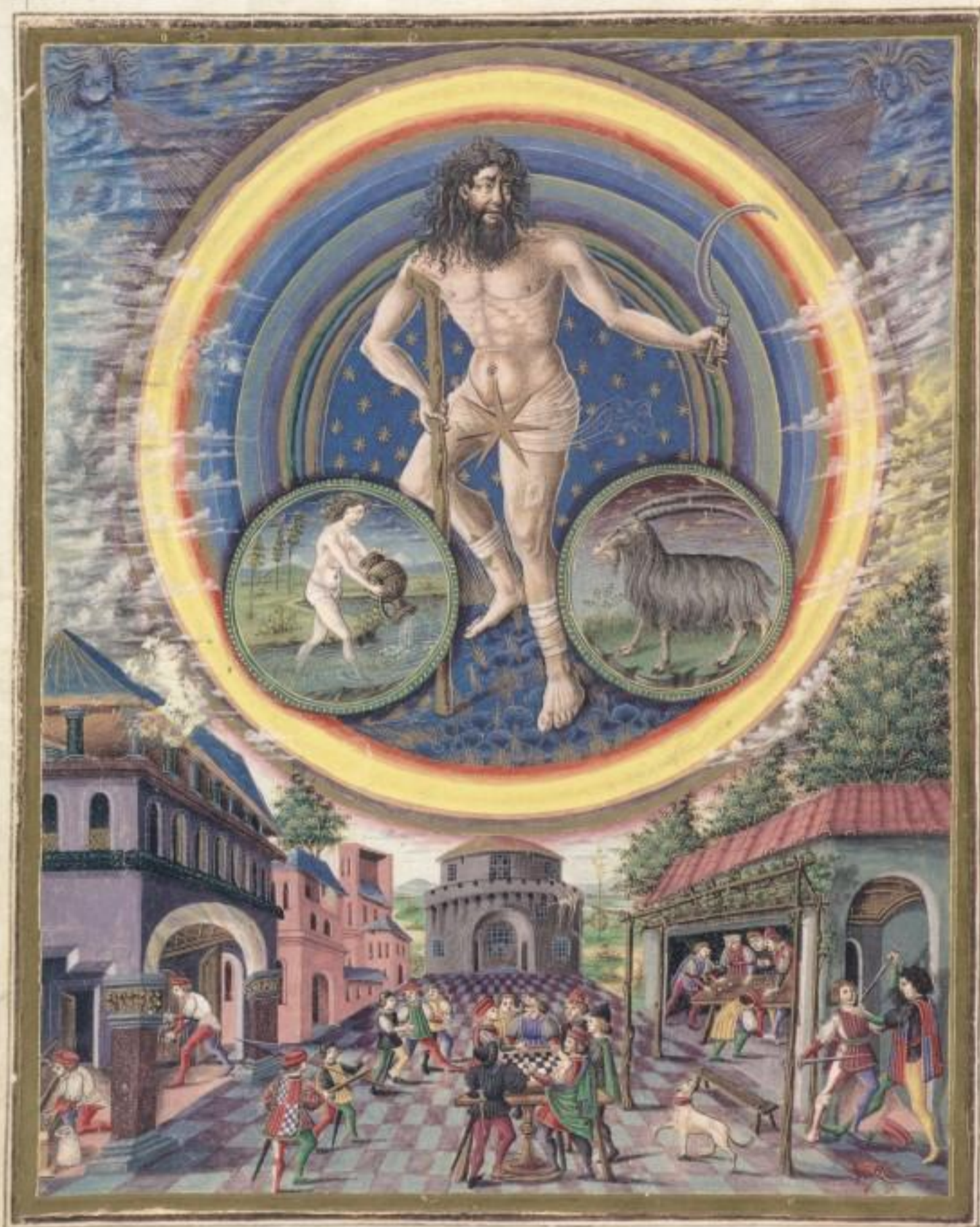


Tabula a climati		dies	alt ^o	latitudo
Noia septē climati		horc	ant ^o 5	
	Initium	12	04 12	04
1 ^o diam ^o	Medium p ^{mi}	13	0 16	0 000
	Finis	13	14 20	30
	Initium	13	14 20	30
2 ^o diam ^o	Medium sc ^{di}	13	30 28	14 000
	Finis	13		21 30
	Initium	13	04 21	30
3 ^o diam ^o	Medium tertij	18	04 30	04 340
	Finis	10	0 33	34
	Initium	10	14 33	34
4 ^o diam ^o	Medium q ^{ra}	10	14 36	20 300
	Finis	10	30 35	43
	Initium	10	04 35	43
5 ^o diam ^o	Medium q ^{nti}	14	04 01	20 244
	Finis	14	0 03	21
	Initium	14	14 03	21
6 ^o diam ^o	Medium sex ^{ti}	14	14 04	20 212
	Finis	14	30 01	14
	Initium	14	04 01	14
7 ^o diam ^o	Medium septi	16	04 48	30 154
	Finis	16	0 40	
Differētia unca p ^{mi} climatis 7 finis.		ae	14	
		3	54 31	04 211
			30	



R.F.

• SATVRNVS •



Saturno huomini tardi et rei prodice
Rubbadi et buiardi et assasini
Villani et mis et senza alebuna luce
Pastori et zoppi et simili meschini :-

• IVPITER •



...
...
...
...

♦ IVPITER ♦



Beneigno e ioue e de uirtu pianeta
Produce mathematici e doctou
Theologi et granti homi ne diueta
Alcuna gentil cosa o grandi honou :-

MARS



...
...
...
...

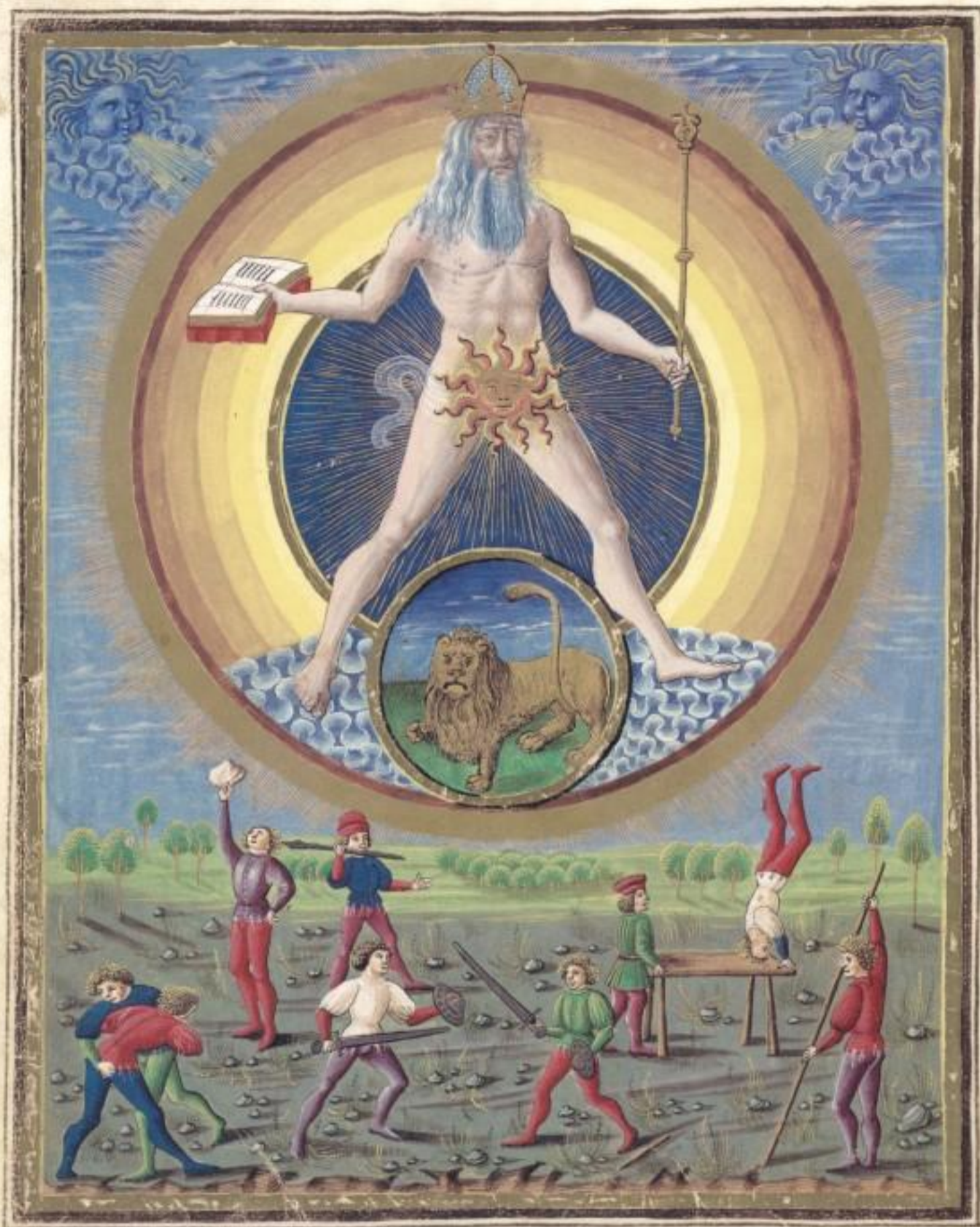
♦ MARS ♦



Il bellicoso marre sempre infiamma
Li animi alteri al guerreggiare et sforza
Her questo hor quello ne fatta sua brama
In lacquistar: ma piu sempre rinforza :-



◆ SOL ◆



Il sole ad honore: l'huomo et gloria sprona
Et togni leggiadria si dilecta
Di sapienza porta la corona
Et di religion produce secta

VENUS



...
...
...
...

• VENVS •

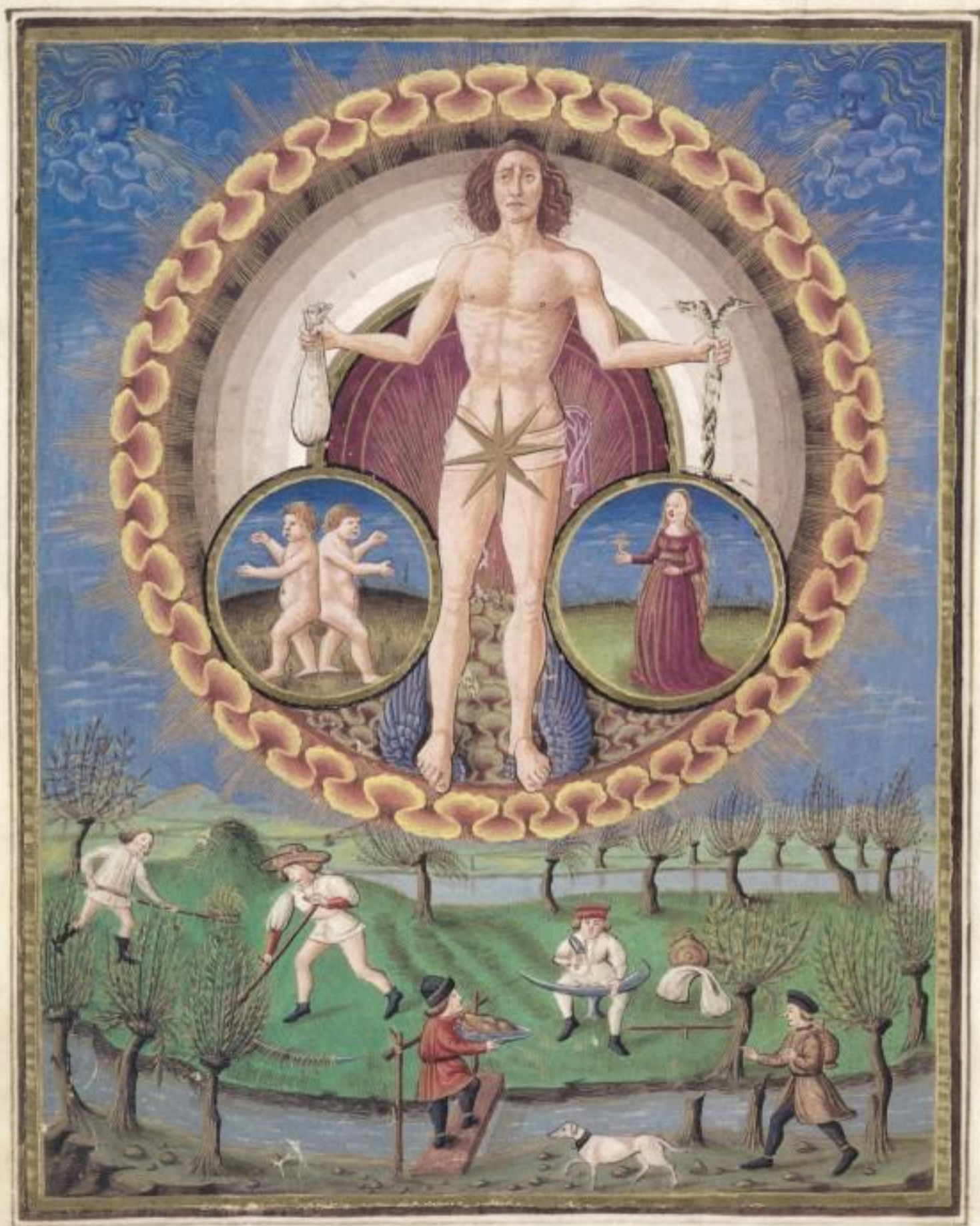


La granosa uener dil suo ardore
Accende i cuor gentili onde in cantare
Et danze et uaghe feste per amore
E induce col suane uagheggiare :-



... in ...
...
...
...

◆ MERCVRIVS ◆



M ercurio di ragion lucida stella
Produce eloquenza gran fontana
Subtili ingiegni et ciaschun arte bella
Et e nuncio dogni cosa uana : -

ANNI



Et in hoc anno
 et in hoc anno
 et in hoc anno
 et in hoc anno

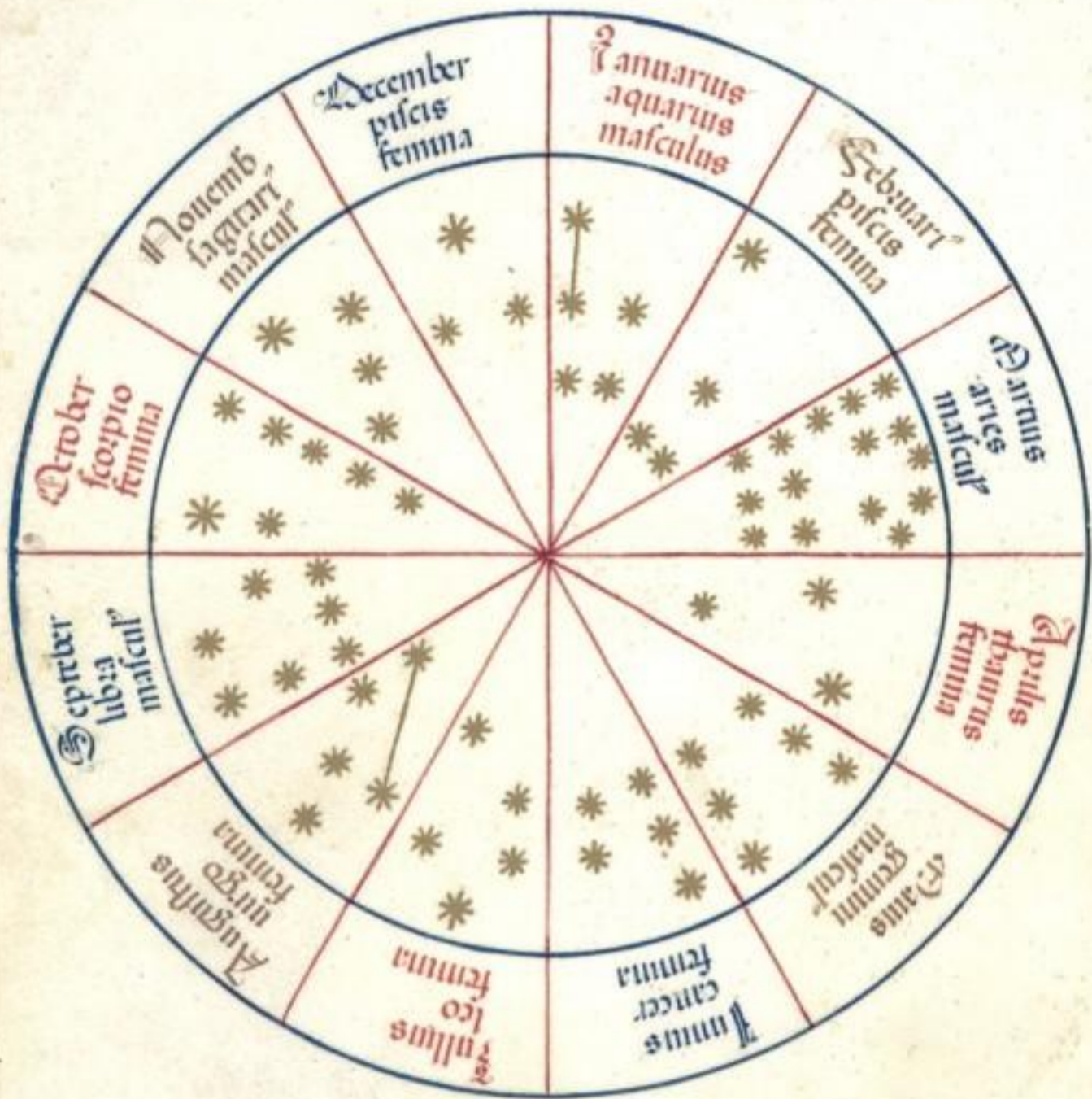
♦ LVNA ♦

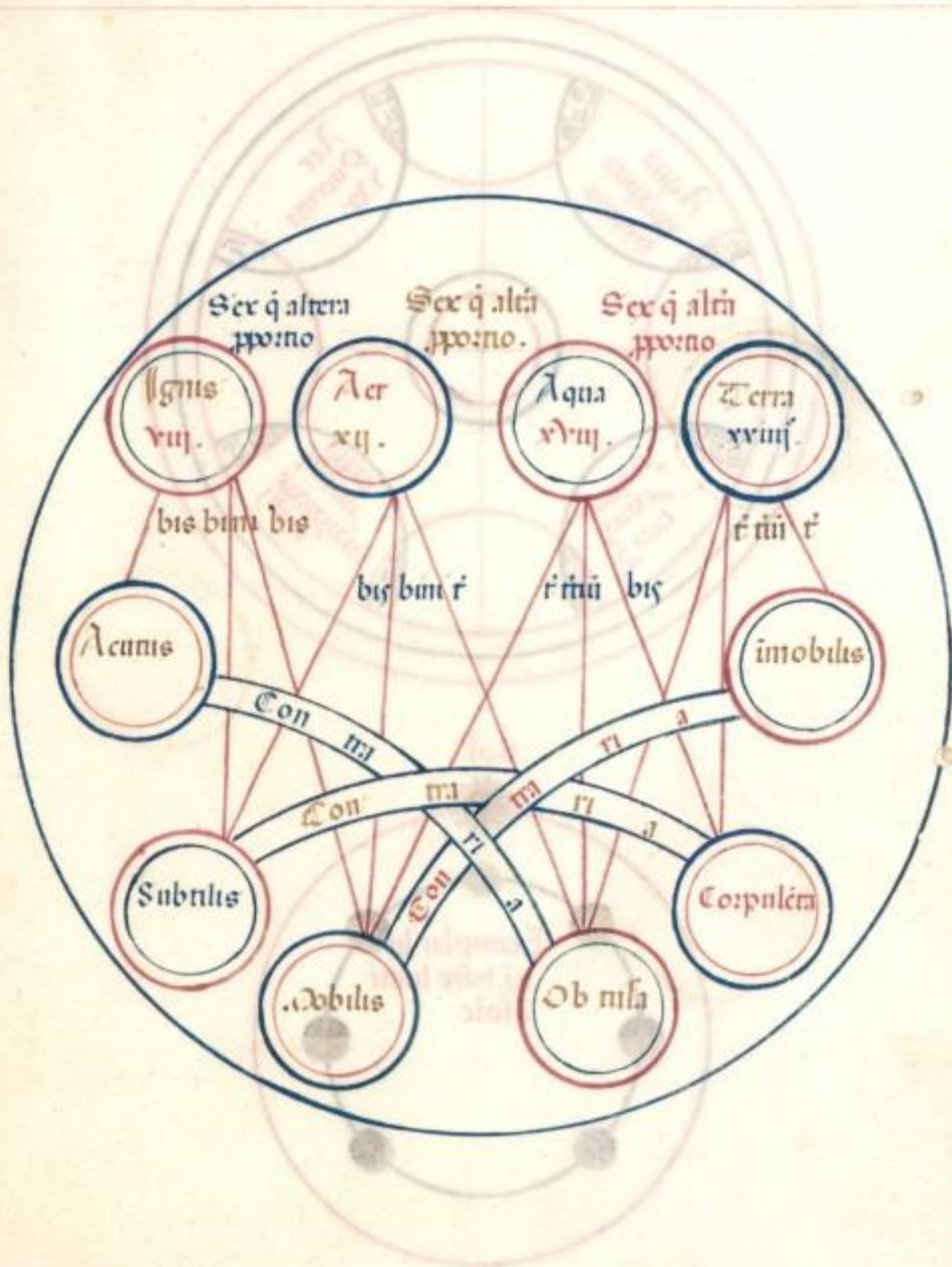


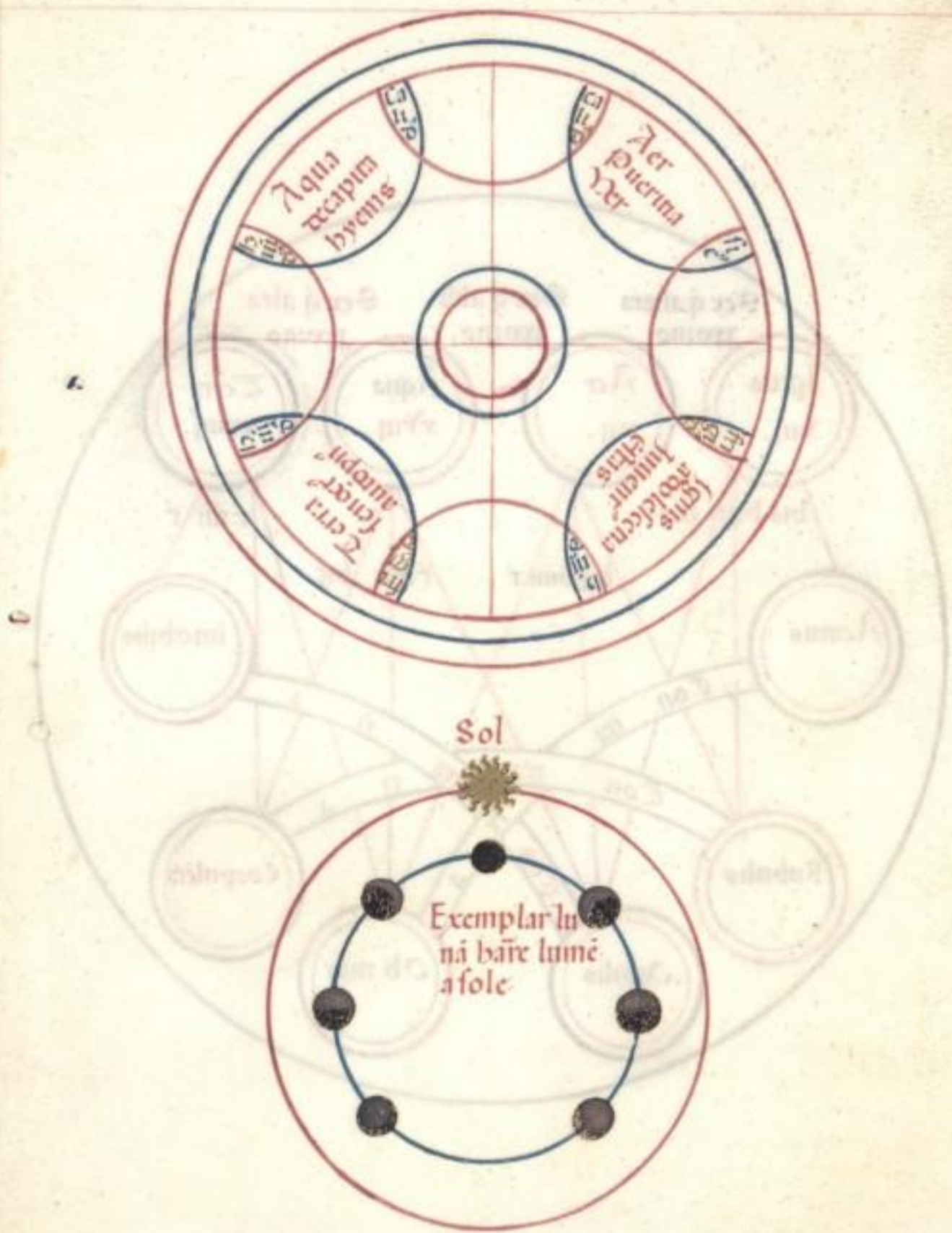
La luna al nauigar molto conforta
Et in pescare et ucellare et caccia
A tutti i suoi figliuoli apre la porta
Et anche al solazzare che ad altri piaccia :-

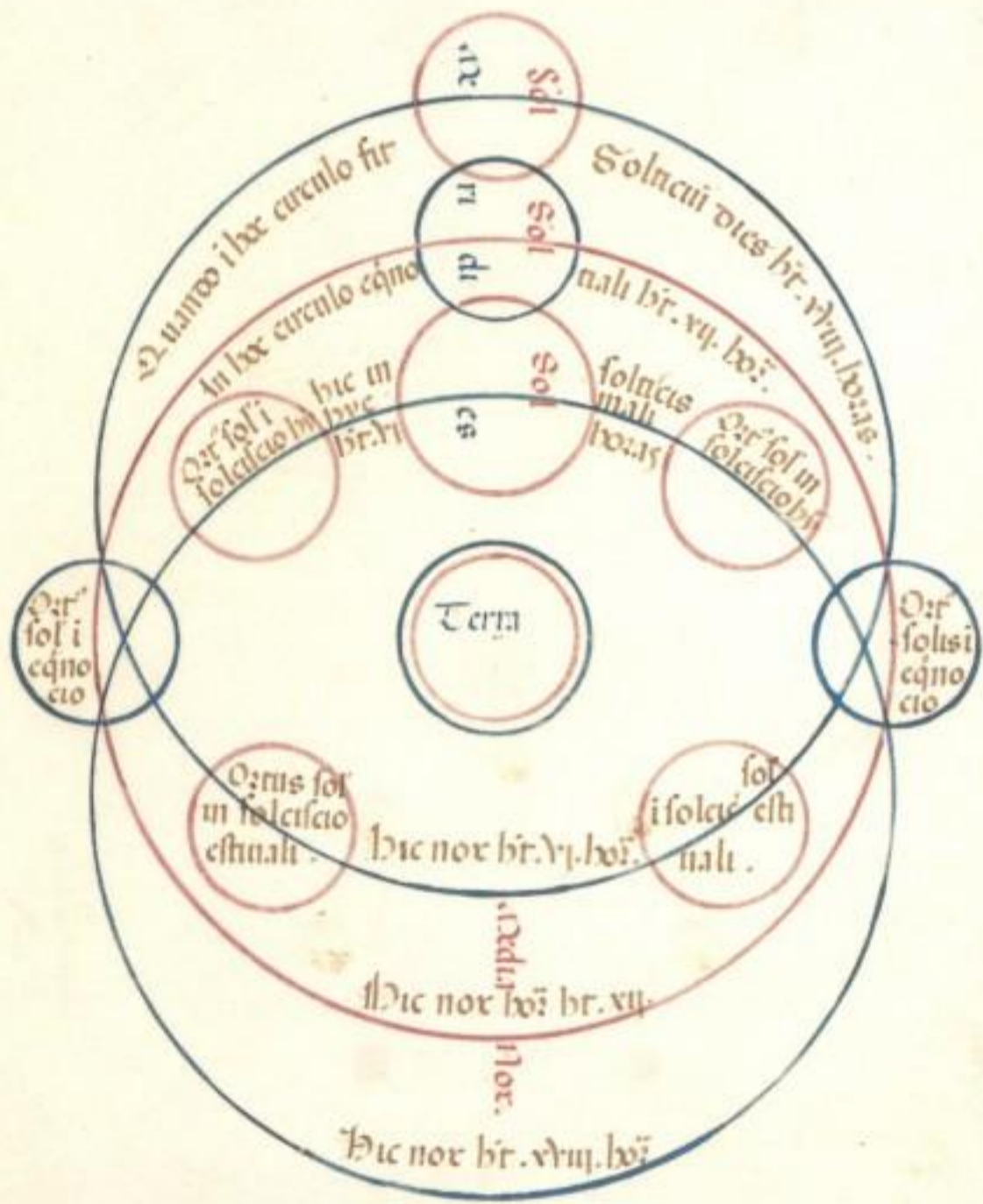


Stellarum. 12. signorum .









B.E.

209

L. 209

~~XII. I. 27~~

Ms. ~~VI. C. 15~~

α. x. 2. 14.

16



